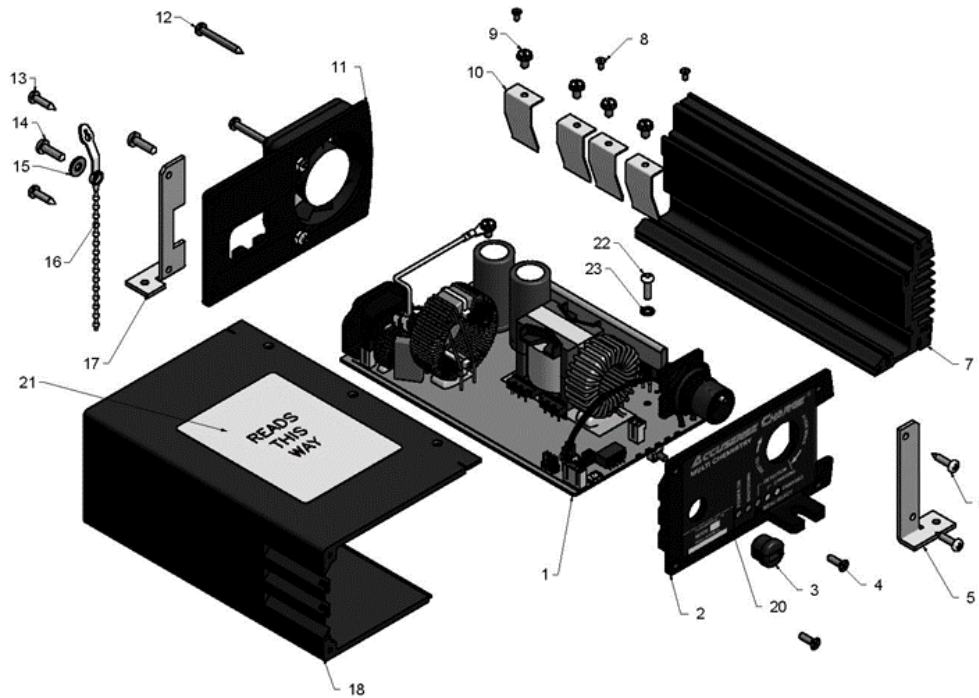


PS2420 Parts List



<u>KIT No.</u>	<u>PARTS DESCRIPTION</u>	<u>Item No(s)</u>
IPCJ0014-L000457	Input A.C. Cable; SJT-18/3, 18in (457mm) IEC_Right_Conn & 5-15P Plug	Not Shown
IPCJ0014-L001830	Input A.C. Cable; SJT-18/3, 72in (1800mm) IEC_Right_Conn & 5-15P Plug	Not Shown
OPCI0028	Output DC Cable, 28.8in (731mm) 12Ga Leads w 3/8" Ring Terminal	Not Shown
OPCI0029	Output DC Cable, 28.8in (731mm) 12Ga Leads w 1/4" & 3/8 Ring Terminal	Not Shown
OPCI0030	Output DC Cable, 11.2in (284mm) 12Ga Leads w 3/8" Ring Terminal	Not Shown
OPCI0031	Output DC Cable, 32.0in (813mm) 12Ga Leads w SB-175 Red	Not Shown
KITS0186	Back Panel with Fan (Mounting leg and tie, not included)	11,12
KITS0187	Front Panel with LED Label, Cable Bushing, P-Clamp (Lockout/CVP via Bushing)	2,3,19,20
KITS0188	Front Panel with LCD Label, Cable Bushing, P-Clamp (Lockout/CVP via Bushing)	2,3,19,20
KITS0192	Mounting Legs and Miscellaneous Hardware Package	5,17,13
KITS0193	AC Cord Tie and Hardware	16,14,15
KITS0194	LCD Display Module and LCD-Cable	22,23,24
37-04USB28A150-00	Software App; Accusense Charge Development Suite	Not Shown
Contact Pro Charging Systems at 615.471.5300 for additional information.		